



The Sizewell C Project

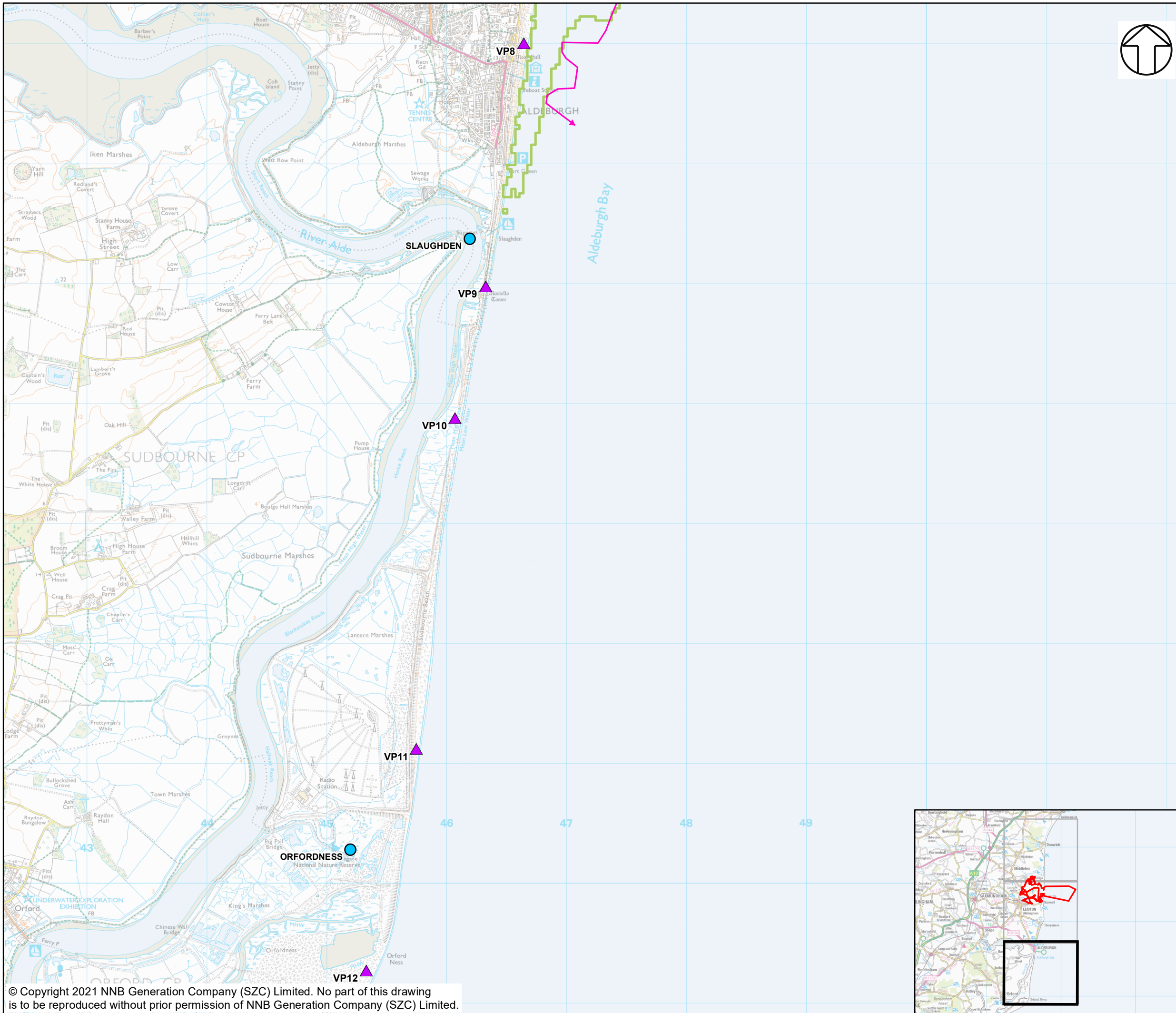
5.10 Shadow Habitats Regulations Assessment Addendum Appendices 1A-10A Part 3 of 5

Revision: 1.0
Applicable Regulation: Regulation 5(2)(e)
PINS Reference Number: EN010012

January 2021

Planning Act 2008
Infrastructure Planning (Applications: Prescribed
Forms and Procedure) Regulations 2009





- NOTES**
- KEY**
- TERN SURVEY VANTAGE POINTS
 - SEABIRD COLONY
 - SPECIES OF TERN**
 - COMMON TERN
 - PREDICTED CHEMICAL AND THERMAL PLUMES FROM SZB**
 - BOUNDARY OF THERMAL UPLIFT AT $\geq 2^{\circ}\text{C}$ AT SEA SURFACE AS 98TH PERCENTILE FOR SZB ALONE

NOT PROTECTIVELY MARKED

COPYRIGHT
Reproduced from Ordnance Survey map with the permission of Ordnance Survey on behalf of the controller of Her Majesty's Stationary Office © Crown Copyright (2019). All Rights reserved. NNB GenCo 0100060408.

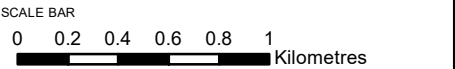


DOCUMENT:
SIZEWELL C PROJECT
SHADOW HRA REPORT ADDENDUM
APPENDIX 6A
FIGURES (BASELINE)

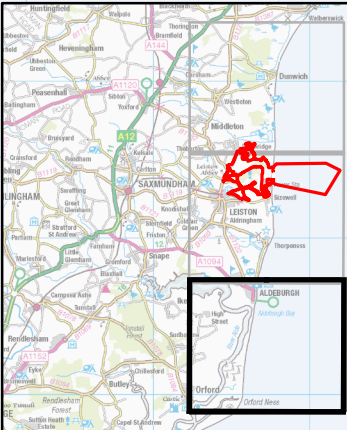
DRAWING TITLE:
LOCATIONS OF FORAGING TERNS RECORDED DURING THE FIRST JULY SURVEY IN 2020, WITH PREDICTED CHEMICAL AND THERMAL PLUMES FROM SZB ALSO SHOWN.

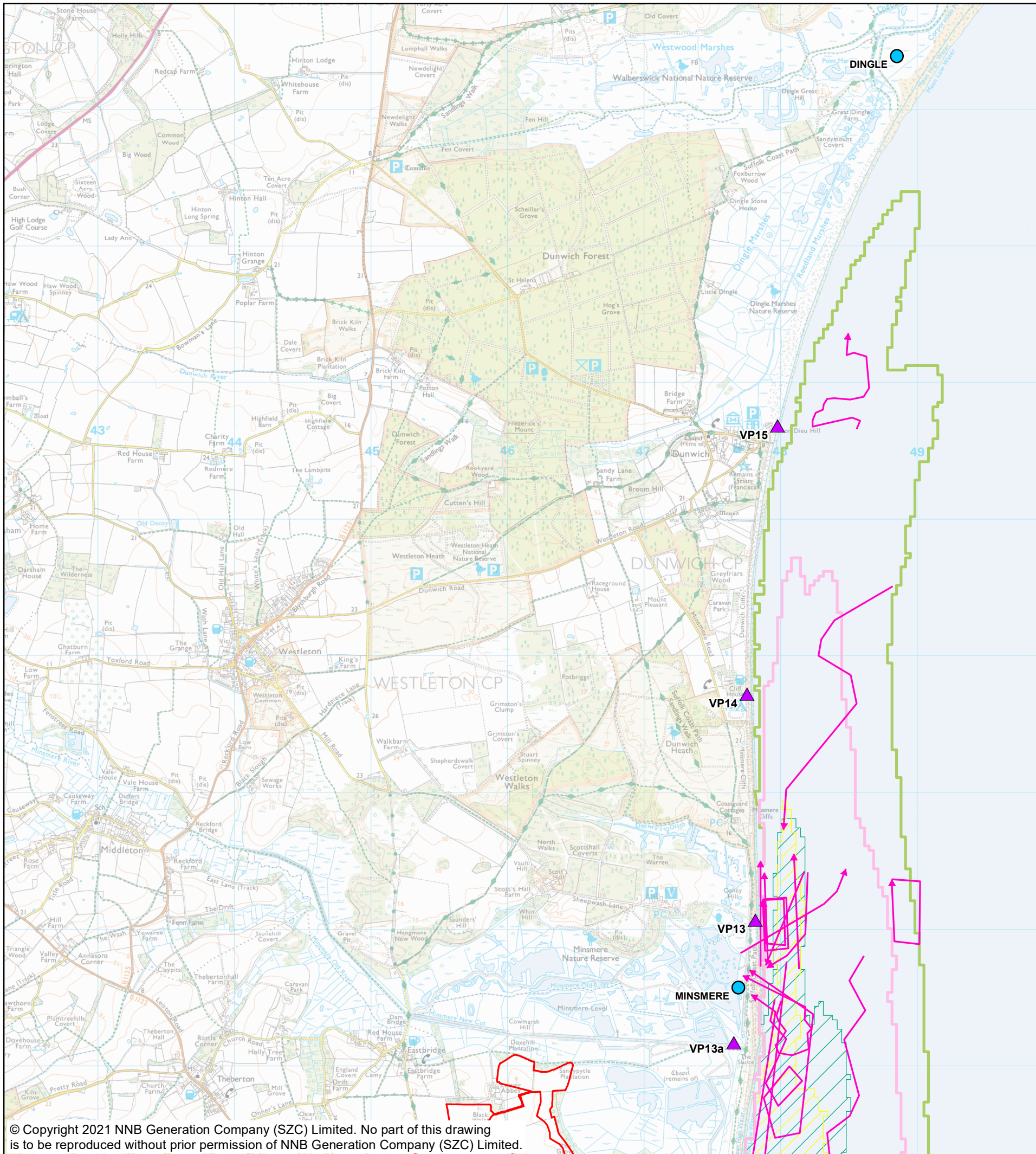
DRAWING NO: MAP 3 OF 3
FIGURE 6A.6

DATE: JAN 2021 **DRAWN:** J.T. **SCALE:** 1:30,000 @A3 **REVISION:** 2.0



© Copyright 2021 NNB Generation Company (SZC) Limited. No part of this drawing is to be reproduced without prior permission of NNB Generation Company (SZC) Limited.





NOTES

KEY

- SIZEWELL C MAIN DEVELOPMENT SITE BOUNDARY
- TERN SURVEY VANTAGE POINTS
- SEABIRD COLONY

SPECIES OF TERN

- COMMON TERN

PREDICTED CHEMICAL AND THERMAL PLUMES FROM SZB

- BOUNDARY OF THERMAL UPLIFT AT $\geq 2^{\circ}\text{C}$ AT SEA SURFACE AS 98TH PERCENTILE FOR SZB ALONE
- BOUNDARY OF THERMAL UPLIFT AT $\geq 3^{\circ}\text{C}$ AT SEA SURFACE AS 98TH PERCENTILE FOR SZB ALONE
- BROMOFORM AT $\geq 5\mu\text{g/l}$ AT SEA SURFACE AS 95TH PERCENTILE FOR SZB
- TOTAL RESIDUAL OXIDANTS AT $\geq 10\mu\text{g/l}$ AT SEA SURFACE AS 95TH PERCENTILE FOR SZB

NOT PROTECTIVELY MARKED

COPYRIGHT
Reproduced from Ordnance Survey map with the permission of Ordnance Survey on behalf of the controller of Her Majesty's Stationary Office © Crown Copyright (2019). All Rights reserved. NNB GenCo 0100060408.



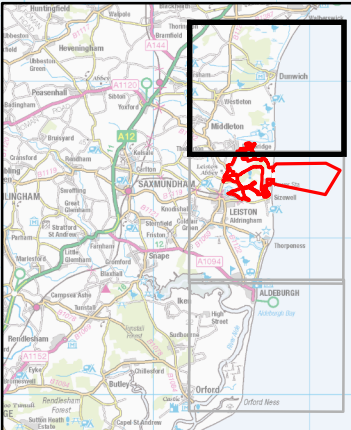
DOCUMENT:
SIZEWELL C PROJECT
SHADOW HRA REPORT ADDENDUM
APPENDIX 6A
FIGURES (BASELINE)

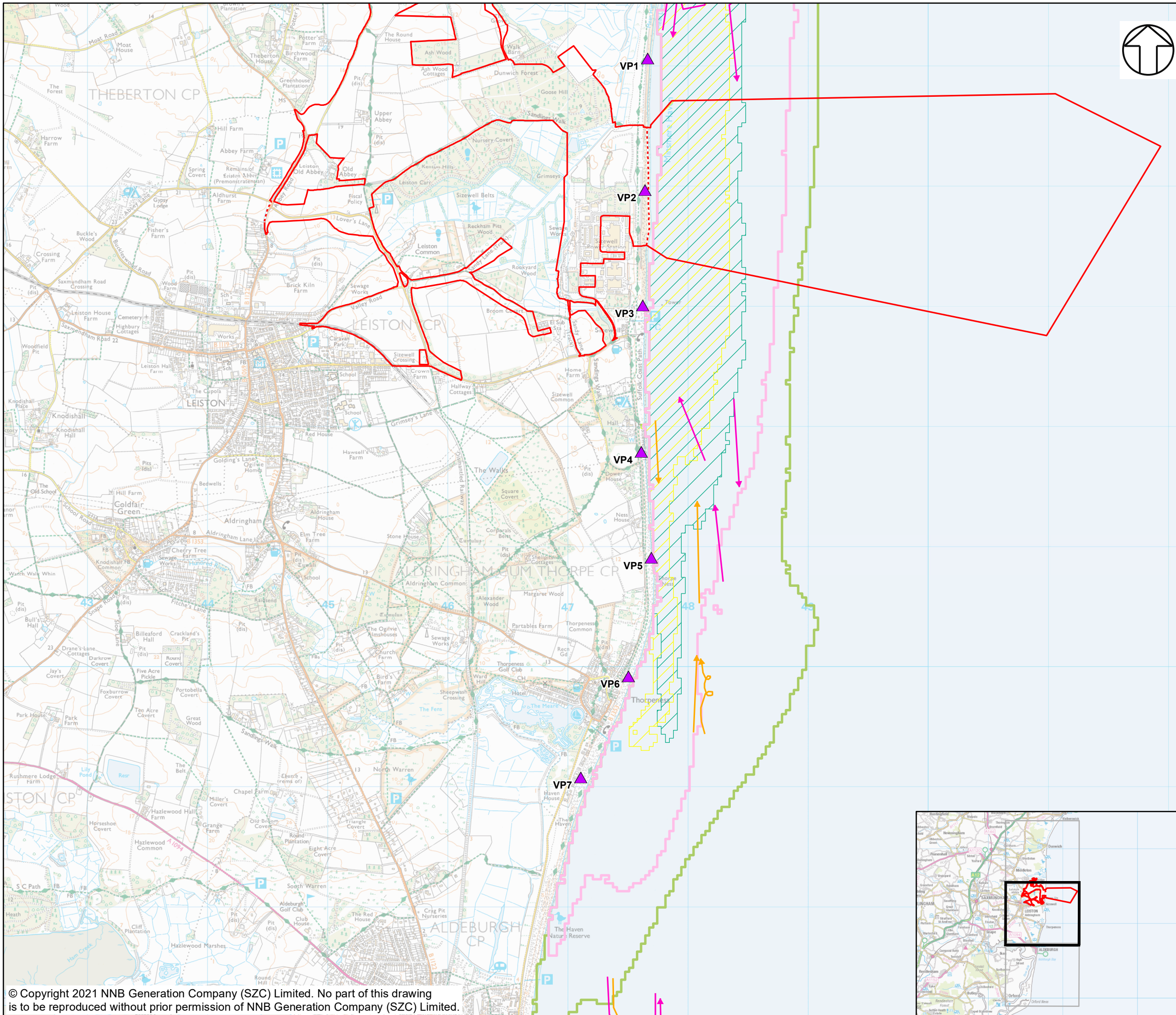
DRAWING TITLE:
LOCATIONS OF FORAGING TERNS RECORDED DURING THE SECOND JULY SURVEY IN 2020, WITH PREDICTED CHEMICAL AND THERMAL PLUMES FROM SZB ALSO SHOWN.

DRAWING NO: FIGURE 6A.7 **MAP 1 OF 3**

DATE: JAN 2021 **DRAWN:** J.T. **SCALE:** 1:30,000 @A3 **REVISION:** 2.0

SCALE BAR
0 0.2 0.4 0.6 0.8 1 Kilometres





NOTES

KEY

- SIZEWELL C MAIN DEVELOPMENT SITE BOUNDARY
- DEMARCATION LINE
- TERN SURVEY VANTAGE POINTS

SPECIES OF TERN

- COMMON TERN
- SANDWICH TERN

PREDICTED CHEMICAL AND THERMAL PLUMES FROM SZB

- BOUNDARY OF THERMAL UPLIFT AT $\geq 2^{\circ}\text{C}$ AT SEA SURFACE AS 98TH PERCENTILE FOR SZB ALONE
- BOUNDARY OF THERMAL UPLIFT AT $\geq 3^{\circ}\text{C}$ AT SEA SURFACE AS 98TH PERCENTILE FOR SZB ALONE
- BROMOFORM AT $\geq 5\mu\text{g/l}$ AT SEA SURFACE AS 95TH PERCENTILE FOR SZB
- TOTAL RESIDUAL OXIDANTS AT $\geq 10\mu\text{g/l}$ AT SEA SURFACE AS 95TH PERCENTILE FOR SZB

NOT PROTECTIVELY MARKED

COPYRIGHT
Reproduced from Ordnance Survey map with the permission of Ordnance Survey on behalf of the controller of Her Majesty's Stationary Office © Crown Copyright (2019). All Rights reserved. NNB GenCo 0100060408.



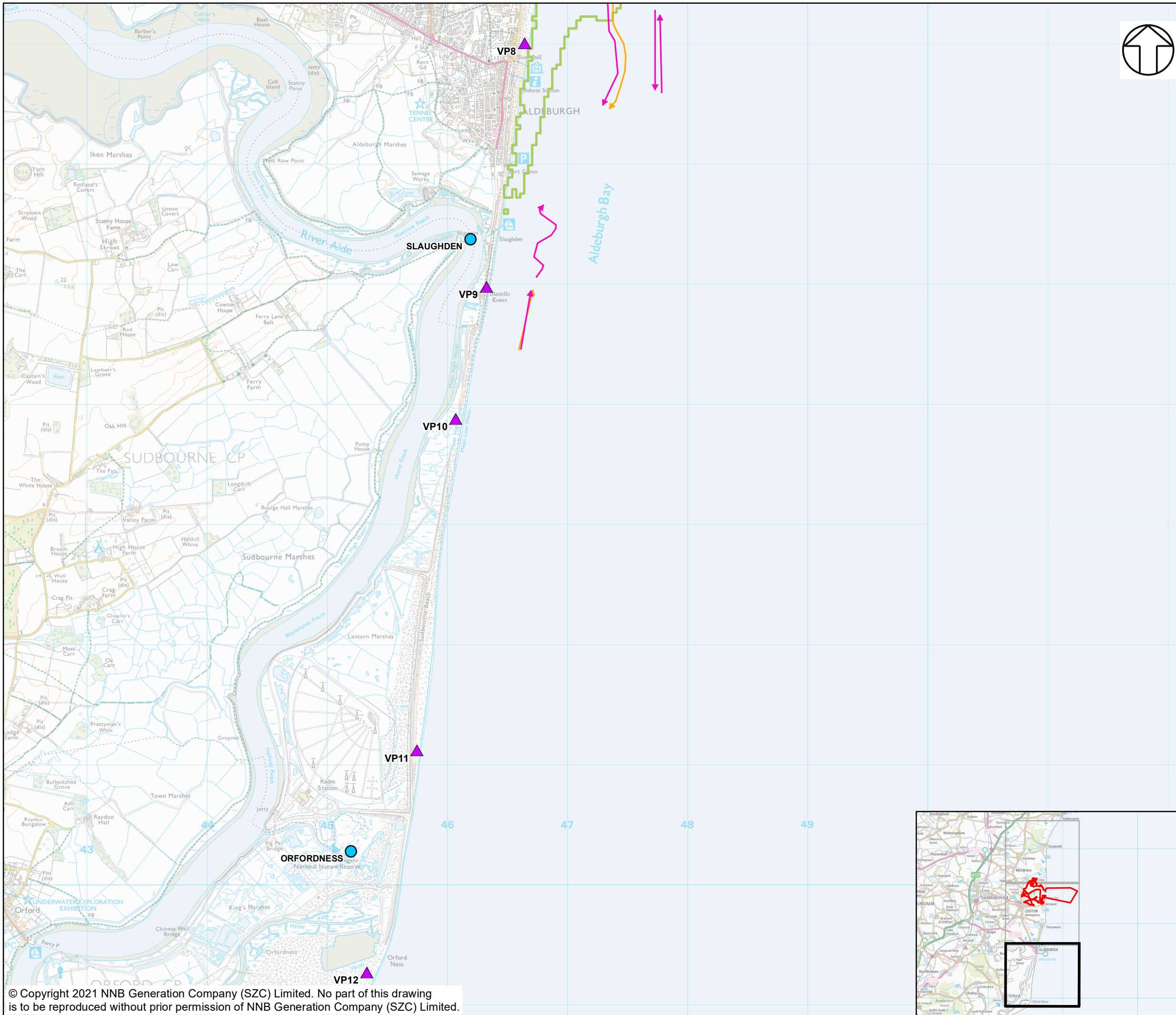
DOCUMENT:
SIZEWELL C PROJECT
SHADOW HRA REPORT ADDENDUM
APPENDIX 6A
FIGURES (BASELINE)

DRAWING TITLE:
LOCATIONS OF FORAGING TERNS RECORDED
DURING THE SECOND JULY SURVEY IN 2020,
WITH PREDICTED CHEMICAL AND THERMAL
PLUMES FROM SZB ALSO SHOWN.

DRAWING NO: MAP 2 OF 3
FIGURE 6A.7

DATE: JAN 2021 DRAWN: J.T. SCALE: 1:30,000 @A3 REVISION: 2.0

SCALE BAR
0 0.2 0.4 0.6 0.8 1 Kilometres



- NOTES**
- KEY**
- TERN SURVEY VANTAGE POINTS
 - SEABIRD COLONY
 - SPECIES OF TERN**
 - COMMON TERN
 - SANDWICH TERN
 - PREDICTED CHEMICAL AND THERMAL PLUMES FROM SZB**
 - BOUNDARY OF THERMAL UPLIFT AT $\geq 2^{\circ}\text{C}$ AT SEA SURFACE AS 98TH PERCENTILE FOR SZB ALONE

NOT PROTECTIVELY MARKED

COPYRIGHT
Reproduced from Ordnance Survey map with the permission of Ordnance Survey on behalf of the controller of Her Majesty's Stationary Office © Crown Copyright (2019). All Rights reserved. NNB GenCo 0100060408.

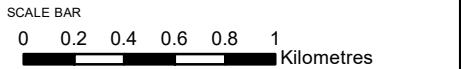


DOCUMENT:
SIZEWELL C PROJECT
SHADOW HRA REPORT ADDENDUM
APPENDIX 6A
FIGURES (BASELINE)

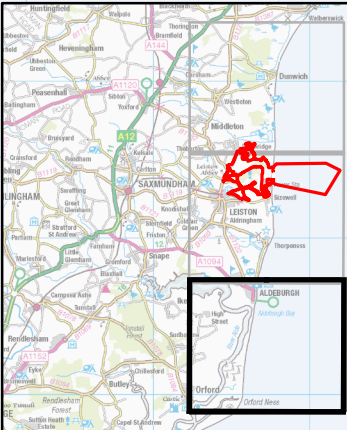
DRAWING TITLE:
LOCATIONS OF FORAGING TERNS RECORDED DURING THE SECOND JULY SURVEY IN 2020, WITH PREDICTED CHEMICAL AND THERMAL PLUMES FROM SZB ALSO SHOWN.

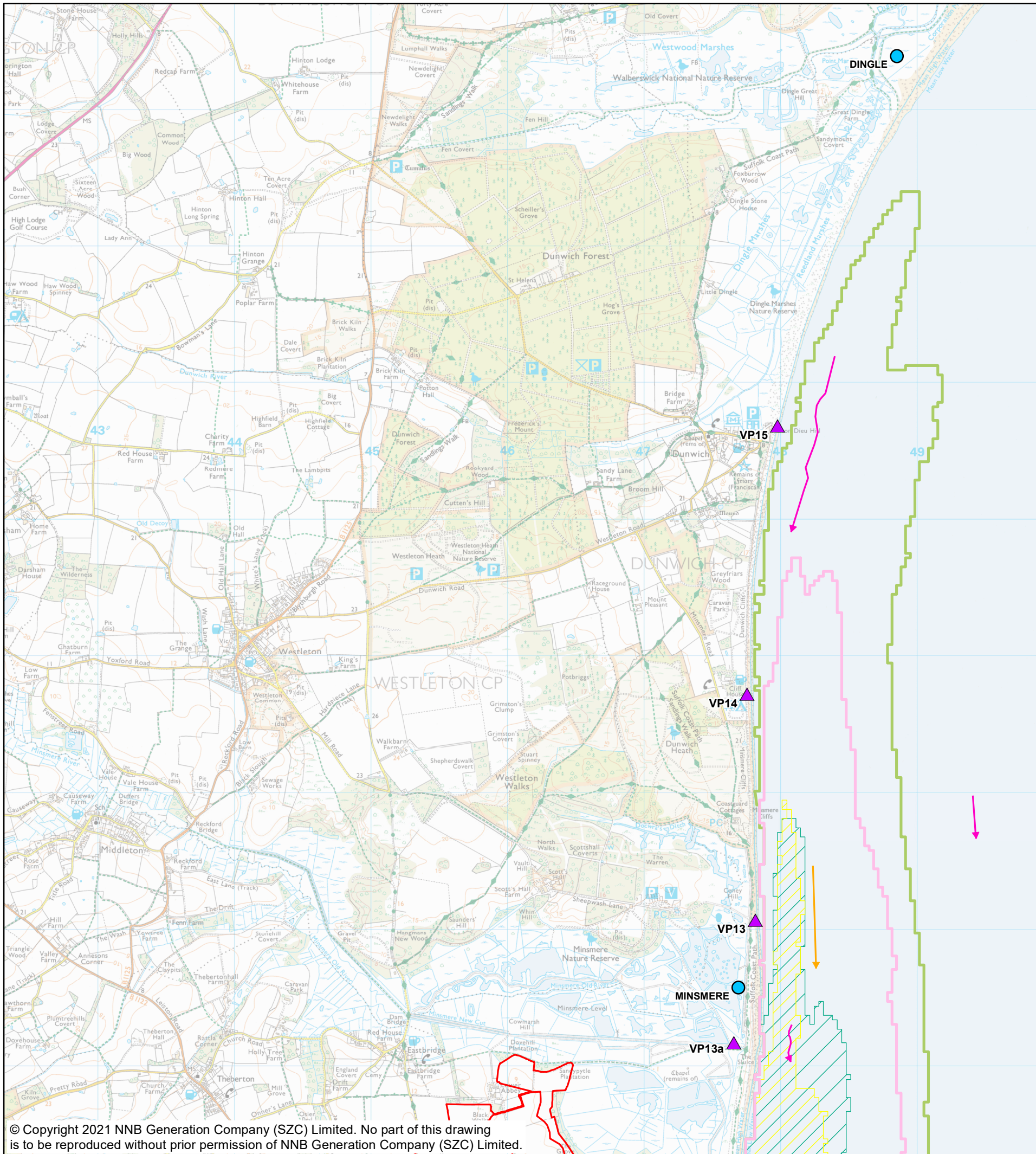
DRAWING NO: MAP 3 OF 3
FIGURE 6A.7

DATE: JAN 2021 **DRAWN:** J.T. **SCALE:** 1:30,000 @A3 **REVISION:** 2.0



© Copyright 2021 NNB Generation Company (SZC) Limited. No part of this drawing is to be reproduced without prior permission of NNB Generation Company (SZC) Limited.





NOTES

KEY

- SIZEWELL C MAIN DEVELOPMENT SITE BOUNDARY
- TERN SURVEY VANTAGE POINTS
- SEABIRD COLONY
- SPECIES OF TERN
 - COMMON TERN
 - SANDWICH TERN

- PREDICTED CHEMICAL AND THERMAL PLUMES FROM SZB
 - BOUNDARY OF THERMAL UPLIFT AT $\geq 2^{\circ}\text{C}$ AT SEA SURFACE AS 98TH PERCENTILE FOR SZB ALONE
 - BOUNDARY OF THERMAL UPLIFT AT $\geq 3^{\circ}\text{C}$ AT SEA SURFACE AS 98TH PERCENTILE FOR SZB ALONE
 - BROMOFORM AT $\geq 5\mu\text{g/l}$ AT SEA SURFACE AS 95TH PERCENTILE FOR SZB
 - TOTAL RESIDUAL OXIDANTS AT $\geq 10\mu\text{g/l}$ AT SEA SURFACE AS 95TH PERCENTILE FOR SZB

NOT PROTECTIVELY MARKED

COPYRIGHT
Reproduced from Ordnance Survey map with the permission of Ordnance Survey on behalf of the controller of Her Majesty's Stationary Office © Crown Copyright (2019). All Rights reserved. NNB GenCo 0100060408.



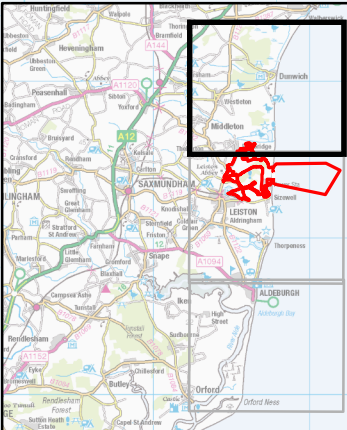
DOCUMENT:
SIZEWELL C PROJECT
SHADOW HRA REPORT ADDENDUM
APPENDIX 6A
FIGURES (BASELINE)

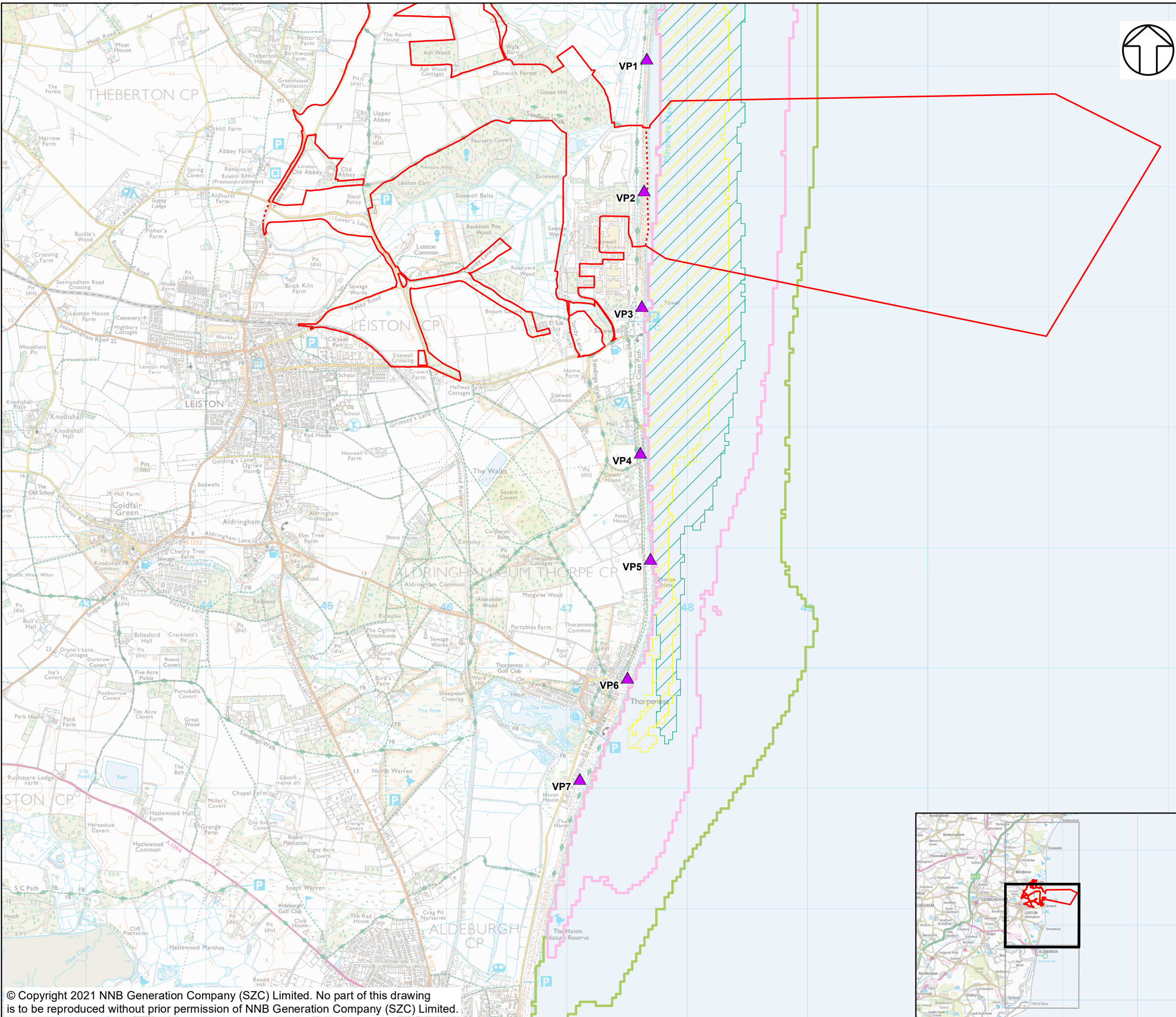
DRAWING TITLE:
LOCATIONS OF FORAGING TERNS RECORDED DURING THE THIRD JULY SURVEY IN 2020, WITH PREDICTED CHEMICAL AND THERMAL PLUMES FROM SZB ALSO SHOWN.

DRAWING NO: MAP 1 OF 3
FIGURE 6A.8

DATE: JAN 2021 **DRAWN:** J.T. **SCALE:** 1:30,000 @A3 **REVISION:** 2.0

SCALE BAR
0 0.2 0.4 0.6 0.8 1 Kilometres





NOTES

KEY

- SIZEWELL C MAIN DEVELOPMENT SITE BOUNDARY
- DEMARCATION LINE
- TERN SURVEY VANTAGE POINTS
- PREDICTED CHEMICAL AND THERMAL PLUMES FROM SZB
 - BOUNDARY OF THERMAL UPLIFT AT $\geq 2^{\circ}\text{C}$ AT SEA SURFACE AS 98TH PERCENTILE FOR SZB ALONE
 - BOUNDARY OF THERMAL UPLIFT AT $\geq 3^{\circ}\text{C}$ AT SEA SURFACE AS 98TH PERCENTILE FOR SZB ALONE
 - BROMOFORM AT $\geq 5\mu\text{g/l}$ AT SEA SURFACE AS 95TH PERCENTILE FOR SZB
 - TOTAL RESIDUAL OXIDANTS AT $\geq 10\mu\text{g/l}$ AT SEA SURFACE AS 95TH PERCENTILE FOR SZB

NOT PROTECTIVELY MARKED

COPYRIGHT
Reproduced from Ordnance Survey map with the permission of Ordnance Survey on behalf of the controller of Her Majesty's Stationary Office © Crown Copyright (2019). All Rights reserved. NNB GenCo 0100060408.



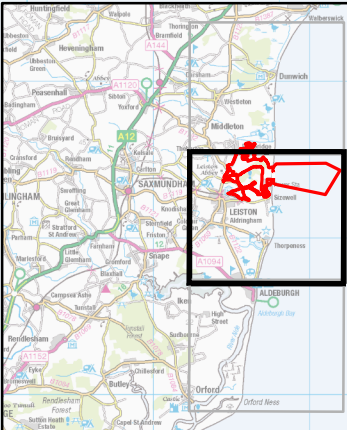
DOCUMENT:
SIZEWELL C PROJECT
SHADOW HRA REPORT ADDENDUM
APPENDIX 6A
FIGURES (BASELINE)

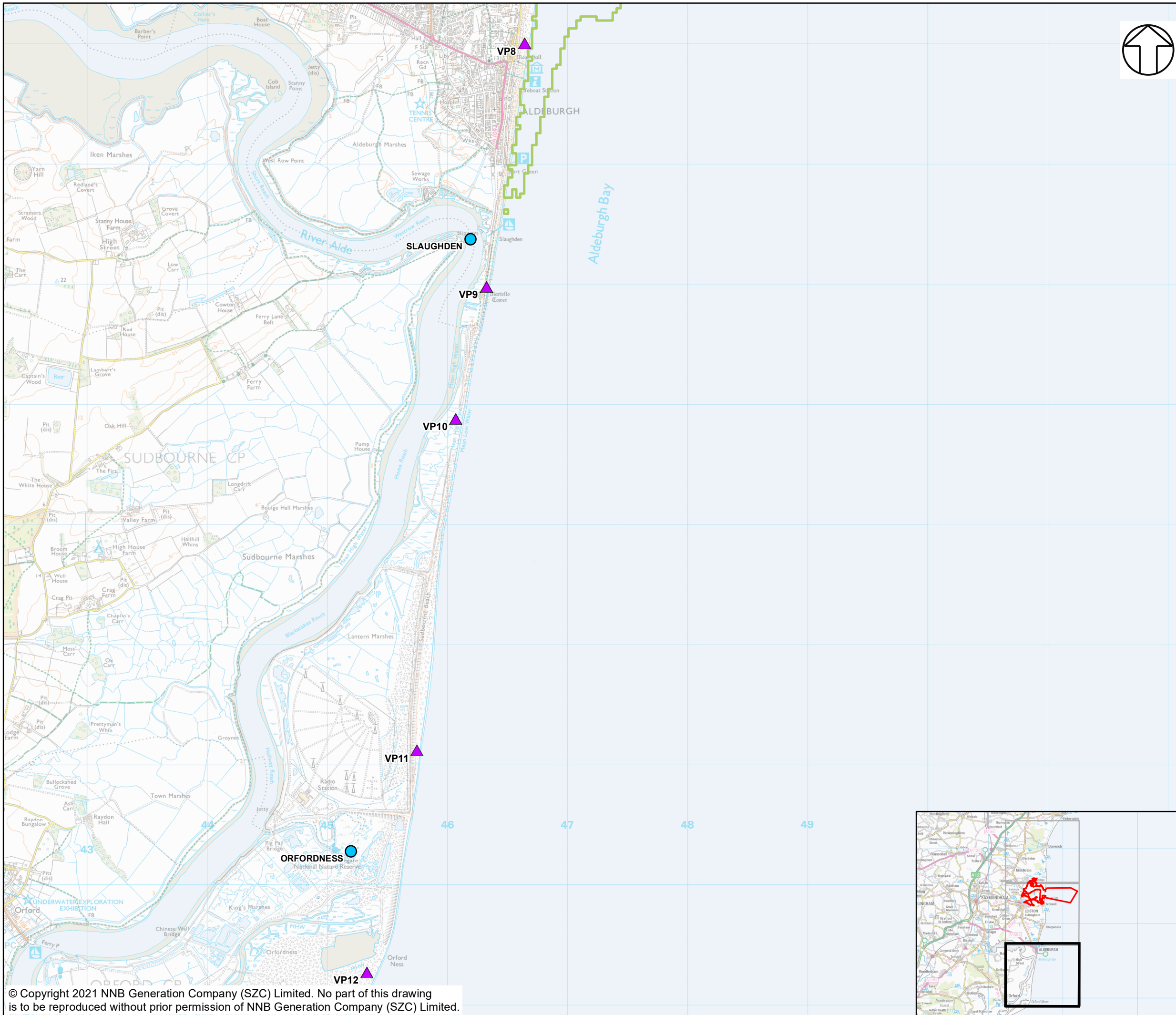
DRAWING TITLE:
LOCATIONS OF FORAGING TERNS RECORDED
DURING THE THIRD JULY SURVEY IN 2020,
WITH PREDICTED CHEMICAL AND THERMAL
PLUMES FROM SZB ALSO SHOWN.

DRAWING NO: MAP 2 OF 3
FIGURE 6A.8

DATE: JAN 2021 DRAWN: J.T. SCALE: 1:30,000 @A3 REVISION: 2.0

SCALE BAR
0 0.2 0.4 0.6 0.8 1 Kilometres





NOTES

KEY

- TERN SURVEY VANTAGE POINTS
- SEABIRD COLONY

PREDICTED CHEMICAL AND THERMAL PLUMES FROM SZB

BOUNDARY OF THERMAL UPLIFT AT $\geq 2^{\circ}\text{C}$ AT SEA SURFACE AS 98TH PERCENTILE FOR SZB ALONE

NOT PROTECTIVELY MARKED

COPYRIGHT
Reproduced from Ordnance Survey map with the permission of Ordnance Survey on behalf of the controller of Her Majesty's Stationary Office © Crown Copyright (2019). All Rights reserved. NNB GenCo 0100060408.



DOCUMENT:
SIZEWELL C PROJECT
SHADOW HRA REPORT ADDENDUM
APPENDIX 6A
FIGURES (BASELINE)

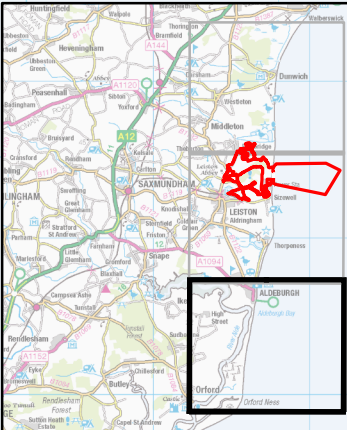
DRAWING TITLE:
LOCATIONS OF FORAGING TERNS RECORDED DURING THE THIRD JULY SURVEY IN 2020, WITH PREDICTED CHEMICAL AND THERMAL PLUMES FROM SZB ALSO SHOWN.

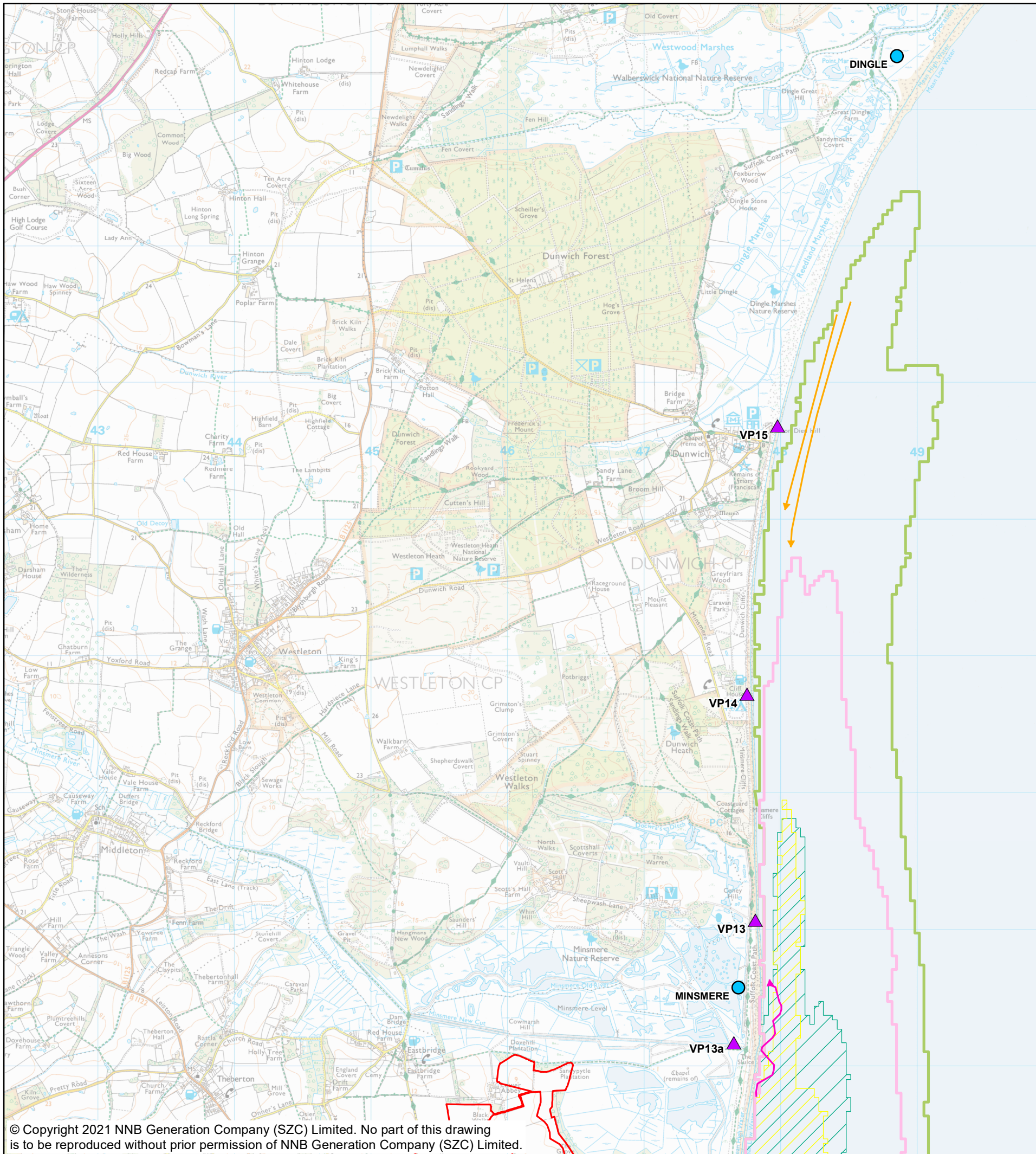
DRAWING NO: MAP 3 OF 3
FIGURE 6A.8

DATE: JAN 2021 **DRAWN:** J.T. **SCALE:** 1:30,000 @A3 **REVISION:** 2.0

SCALE BAR
0 0.2 0.4 0.6 0.8 1 Kilometres

© Copyright 2021 NNB Generation Company (SZC) Limited. No part of this drawing is to be reproduced without prior permission of NNB Generation Company (SZC) Limited.





NOTES

KEY

- SIZEWELL C MAIN DEVELOPMENT SITE BOUNDARY
- TERN SURVEY VANTAGE POINTS
- SEABIRD COLONY
- SPECIES OF TERN
 - COMMON TERN
 - SANDWICH TERN

- PREDICTED CHEMICAL AND THERMAL PLUMES FROM SZB
 - BOUNDARY OF THERMAL UPLIFT AT $\geq 2^{\circ}\text{C}$ AT SEA SURFACE AS 98TH PERCENTILE FOR SZB ALONE
 - BOUNDARY OF THERMAL UPLIFT AT $\geq 3^{\circ}\text{C}$ AT SEA SURFACE AS 98TH PERCENTILE FOR SZB ALONE
 - BROMOFORM AT $\geq 5\mu\text{g/l}$ AT SEA SURFACE AS 95TH PERCENTILE FOR SZB
 - TOTAL RESIDUAL OXIDANTS AT $\geq 10\mu\text{g/l}$ AT SEA SURFACE AS 95TH PERCENTILE FOR SZB

NOT PROTECTIVELY MARKED

COPYRIGHT
Reproduced from Ordnance Survey map with the permission of Ordnance Survey on behalf of the controller of Her Majesty's Stationary Office © Crown Copyright (2019). All Rights reserved. NNB GenCo 0100060408.

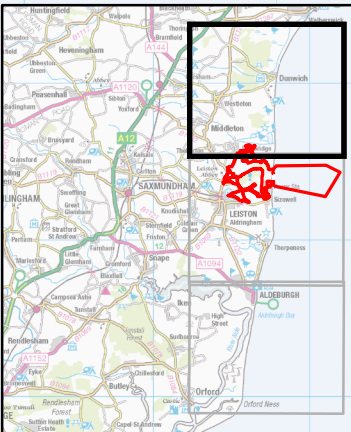
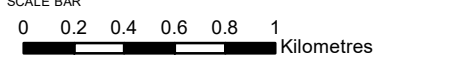


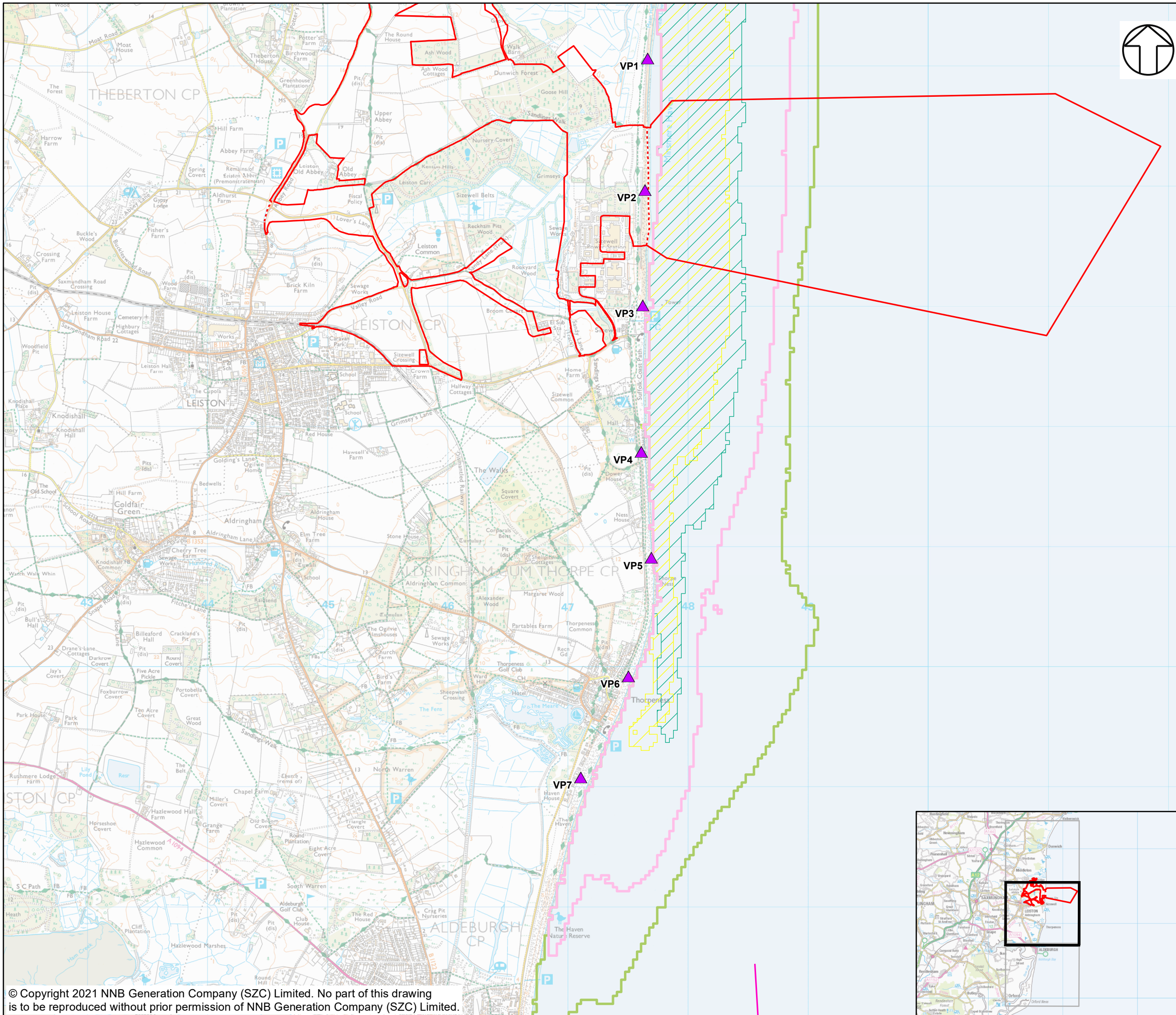
DOCUMENT:
SIZEWELL C PROJECT
SHADOW HRA REPORT ADDENDUM
APPENDIX 6A
FIGURES (BASELINE)

DRAWING TITLE:
LOCATIONS OF FORAGING TERNS RECORDED DURING THE FIRST AUGUST SURVEY IN 2020, WITH PREDICTED CHEMICAL AND THERMAL PLUMES FROM SZB ALSO SHOWN.

DRAWING NO: FIGURE 6A.9 **MAP 1 OF 3**

DATE: JAN 2021 **DRAWN:** J.T. **SCALE:** 1:30,000 @A3 **REVISION:** 2.0





NOTES

KEY

- SIZEWELL C MAIN DEVELOPMENT SITE BOUNDARY
- DEMARCATION LINE
- TERN SURVEY VANTAGE POINTS

SPECIES OF TERN

- COMMON TERN

PREDICTED CHEMICAL AND THERMAL PLUMES FROM SZB

- BOUNDARY OF THERMAL UPLIFT AT $\geq 2^{\circ}\text{C}$ AT SEA SURFACE AS 98TH PERCENTILE FOR SZB ALONE
- BOUNDARY OF THERMAL UPLIFT AT $\geq 3^{\circ}\text{C}$ AT SEA SURFACE AS 98TH PERCENTILE FOR SZB ALONE
- BROMOFORM AT $\geq 5\mu\text{g/l}$ AT SEA SURFACE AS 95TH PERCENTILE FOR SZB
- TOTAL RESIDUAL OXIDANTS AT $\geq 10\mu\text{g/l}$ AT SEA SURFACE AS 95TH PERCENTILE FOR SZB

NOT PROTECTIVELY MARKED

COPYRIGHT
Reproduced from Ordnance Survey map with the permission of Ordnance Survey on behalf of the controller of Her Majesty's Stationary Office © Crown Copyright (2019). All Rights reserved. NNB GenCo 0100060408.



DOCUMENT:
SIZEWELL C PROJECT
SHADOW HRA REPORT ADDENDUM
APPENDIX 6A
FIGURES (BASELINE)

DRAWING TITLE:
LOCATIONS OF FORAGING TERNS RECORDED DURING THE FIRST AUGUST SURVEY IN 2020, WITH PREDICTED CHEMICAL AND THERMAL PLUMES FROM SZB ALSO SHOWN.

DRAWING NO: MAP 2 OF 3
FIGURE 6A.9

DATE: JAN 2021 **DRAWN:** J.T. **SCALE:** 1:30,000 @A3 **REVISION:** 2.0

SCALE BAR
0 0.2 0.4 0.6 0.8 1 Kilometres